

\$448,700 - 5735 90 Avenue, Edmonton

MLS® #E4430133

\$448,700

4 Bedroom, 2.00 Bathroom, 1,037 sqft

Single Family on 0.00 Acres

Kenilworth, Edmonton, AB

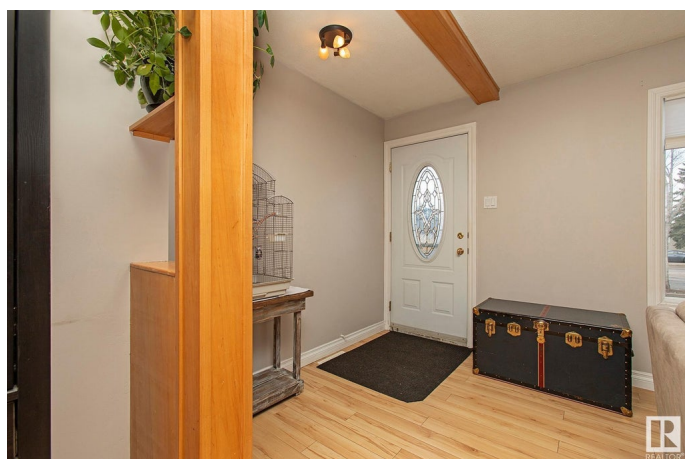
Well appointed 3+1 bedroom family home in Ottewell. This home features a sunny south facing large backyard with a double car garage. Upgrades include vinyl siding, newer shingles on garage, newer windows throughout the house, two bay windows. Two fully renovated 4 piece bathrooms, newer kitchen, stainless steel appliances, nice open layout. Professionally finished basement, furnace changed in 2011 hot water tank in 2025 there is 220 in the Garage

Built in 1965

Essential Information

MLS® #	E4430133
Price	\$448,700
Bedrooms	4
Bathrooms	2.00
Full Baths	2
Square Footage	1,037
Acres	0.00
Year Built	1965
Type	Single Family
Sub-Type	Detached Single Family
Style	Bungalow
Status	Active

Community Information



Address	5735 90 Avenue
Area	Edmonton
Subdivision	Kenilworth
City	Edmonton
County	ALBERTA
Province	AB
Postal Code	T6B 0P1

Amenities

Amenities	See Remarks
Parking	Double Garage Detached

Interior

Appliances	Dishwasher-Built-In, Dryer, Refrigerator, Stove-Electric, Washer
Heating	Forced Air-1, Natural Gas
Stories	2
Has Basement	Yes
Basement	Full, Finished

Exterior

Exterior	Wood, Vinyl
Exterior Features	Fenced, Flat Site, Landscaped, Paved Lane, Public Transportation, Schools, Shopping Nearby
Roof	Asphalt Shingles
Construction	Wood, Vinyl
Foundation	Concrete Perimeter

School Information

Elementary	Kenilworth
Middle	Waverley
High	Austin Oâ€™Brien

Additional Information

Date Listed	April 10th, 2025
Days on Market	9
Zoning	Zone 18

DATA IS DEEMED RELIABLE BUT IS NOT GUARANTEED ACCURATE BY THE REALTORS® ASSOCIATION OF EDMONTON. COPYRIGHT 2025 BY THE REALTORS® ASSOCIATION OF EDMONTON. ALL RIGHTS RESERVED.Trademarks are owned or controlled by the Canadian Real Estate Association (CREA) and identify real estate professionals who are members of CREA (REALTOR®, REALTORS®) and/or the quality of services they

provide (MLS® , Multiple Listing Service®)
Listing information last updated on April 19th, 2025 at 4:02pm MDT