

# \$549,900 - 7 Napoleon Crescent, St. Albert

MLS® #E4430128

**\$549,900**

4 Bedroom, 3.50 Bathroom, 1,853 sqft

Single Family on 0.00 Acres

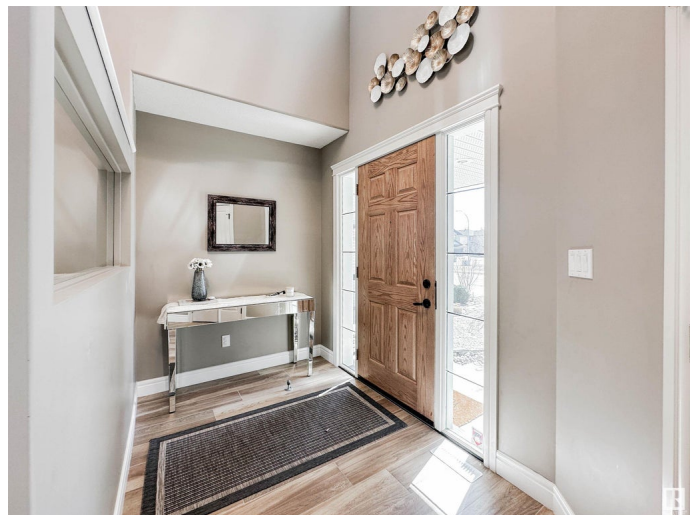
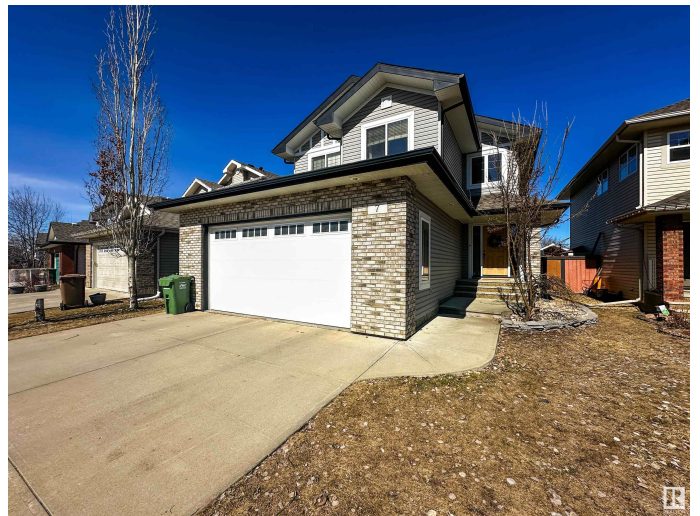
North Ridge, St. Albert, AB

Welcome to this bright and updated Sarasota built 2-storey home nestled in a desirable North Ridge. Featuring 3 spacious bedrooms upstairs plus a versatile bonus room—perfect for a home office or playroom. The heart of the home is the stunning white kitchen, updated with quartz countertops and plenty of natural light. The main floor boasts an inviting open foyer, convenient laundry room, and functional layout. Enjoy even more living space in the fully finished basement, complete with additional bedroom, full bathroom, and large rec room—ideal for guests, teens, or extended family. Step out into your backyard oasis, with direct access to scenic Napoleon Park. All this just blocks from top-rated schools and picturesque trails. A true gem in a family-friendly neighbourhood!

Built in 2007

## Essential Information

MLS® #	E4430128
Price	\$549,900
Bedrooms	4
Bathrooms	3.50
Full Baths	3
Half Baths	1
Square Footage	1,853
Acres	0.00



Year Built	2007
Type	Single Family
Sub-Type	Detached Single Family
Style	2 Storey
Status	Active

### **Community Information**

Address	7 Napoleon Crescent
Area	St. Albert
Subdivision	North Ridge
City	St. Albert
County	ALBERTA
Province	AB
Postal Code	T8N 1C6

### **Amenities**

Amenities	Air Conditioner, Ceiling 9 ft., Deck, Exterior Walls- 2"x6", See Remarks
Parking Spaces	4
Parking	Double Garage Attached

### **Interior**

Interior Features	ensuite bathroom
Appliances	Air Conditioning-Central, Dishwasher-Built-In, Dryer, Garage Control, Garage Opener, Garburator, Microwave Hood Fan, Refrigerator, Storage Shed, Stove-Electric, Window Coverings
Heating	Forced Air-1, Natural Gas
Fireplace	Yes
Fireplaces	Mantel
Stories	2
Has Basement	Yes
Basement	Full, Finished

### **Exterior**

Exterior	Wood, Brick, Vinyl
Exterior Features	Backs Onto Park/Trees, Fenced, Landscaped, Park/Reserve, Playground Nearby, Public Transportation, Schools, Shopping Nearby, See Remarks
Roof	Asphalt Shingles
Construction	Wood, Brick, Vinyl

Foundation            Concrete Perimeter

### **Additional Information**

Date Listed            April 10th, 2025

Days on Market      3

Zoning                 Zone 24

DATA IS DEEMED RELIABLE BUT IS NOT GUARANTEED ACCURATE BY THE REALTORS® ASSOCIATION OF EDMONTON. COPYRIGHT 2025 BY THE REALTORS® ASSOCIATION OF EDMONTON. ALL RIGHTS RESERVED. Trademarks are owned or controlled by the Canadian Real Estate Association (CREA) and identify real estate professionals who are members of CREA (REALTOR®, REALTORS®) and/or the quality of services they provide (MLS®, Multiple Listing Service®)

Listing information last updated on April 13th, 2025 at 12:32pm MDT