

\$99,900 - 106 4503 51 Street, Leduc

MLS® #E4428240

\$99,900

1 Bedroom, 1.00 Bathroom, 693 sqft

Condo / Townhouse on 0.00 Acres

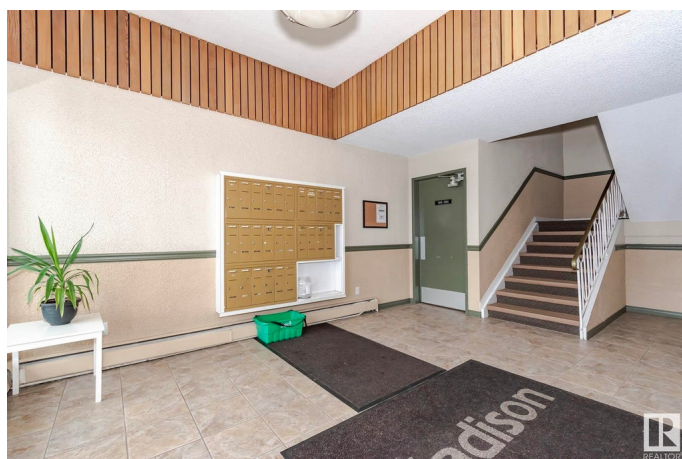
Linsford Park, Leduc, AB

Step into affordable homeownership with this charming 1bedroom apartment in the heart of Leduc. A haven to inspire your dreams of homeownership. Thoughtful layout provides super large living area with south facing patio doors letting in plenty of light. Functional kitchen and dining area. Bedroom is very generously sized and features two double closets providing tons of room for your clothes plus there is an additional storage room which is large enough for a bike if you want it. Shopping, schools, transit and amenities all close by providing convenience at your doorstep. An ideal starter home perfect for first time home buyer offering comfort, style, and the freedom to live life on your terms. Whether youâ€™re looking for a place to call your own or a smart first investment, this move-in-ready condo offers both comfort and opportunity. Don't just imagine your future; step into it today!

Built in 1972

Essential Information

MLS® #	E4428240
Price	\$99,900
Bedrooms	1
Bathrooms	1.00
Full Baths	1



Square Footage	693
Acres	0.00
Year Built	1972
Type	Condo / Townhouse
Sub-Type	Lowrise Apartment
Style	Single Level Apartment
Status	Active

Community Information

Address	106 4503 51 Street
Area	Leduc
Subdivision	Linsford Park
City	Leduc
County	ALBERTA
Province	AB
Postal Code	T9E 5C1

Amenities

Amenities	Security Door
Parking	Stall

Interior

Appliances	Dishwasher-Built-In, Hood Fan, Refrigerator, Stove-Electric, Window Coverings
Heating	Baseboard, Water
# of Stories	4
Stories	4
Has Basement	Yes
Basement	None, No Basement

Exterior

Exterior	Wood, Brick
Exterior Features	Landscaped, Playground Nearby, Public Transportation, Schools, Shopping Nearby
Roof	Asphalt Shingles
Construction	Wood, Brick
Foundation	Concrete Perimeter

Additional Information

Date Listed	March 30th, 2025
Days on Market	19
Zoning	Zone 81
Condo Fee	\$423

DATA IS DEEMED RELIABLE BUT IS NOT GUARANTEED ACCURATE BY THE REALTORS® ASSOCIATION OF EDMONTON. COPYRIGHT 2025 BY THE REALTORS® ASSOCIATION OF EDMONTON. ALL RIGHTS RESERVED. Trademarks are owned or controlled by the Canadian Real Estate Association (CREA) and identify real estate professionals who are members of CREA (REALTOR®, REALTORS®) and/or the quality of services they provide (MLS®, Multiple Listing Service®)

Listing information last updated on April 18th, 2025 at 2:02am MDT