

Courtesy Of Wasef Bzeih Of The E Group Real Estate

## \$449,900 - 12416 136 Avenue, Edmonton

MLS® #E4428068

**\$449,900**

5 Bedroom, 2.00 Bathroom, 1,042 sqft  
Single Family on 0.00 Acres

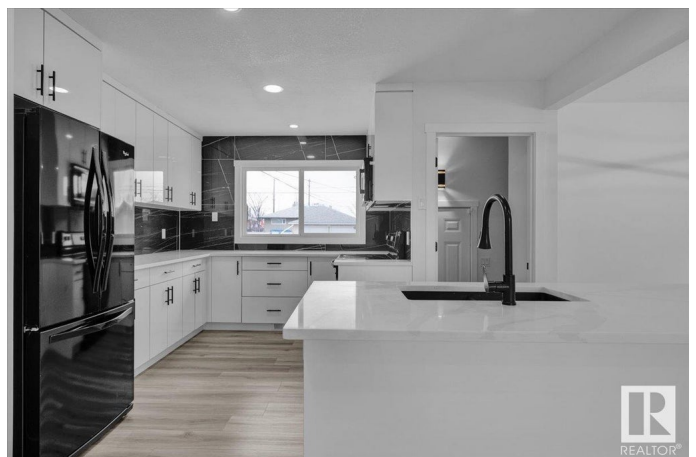
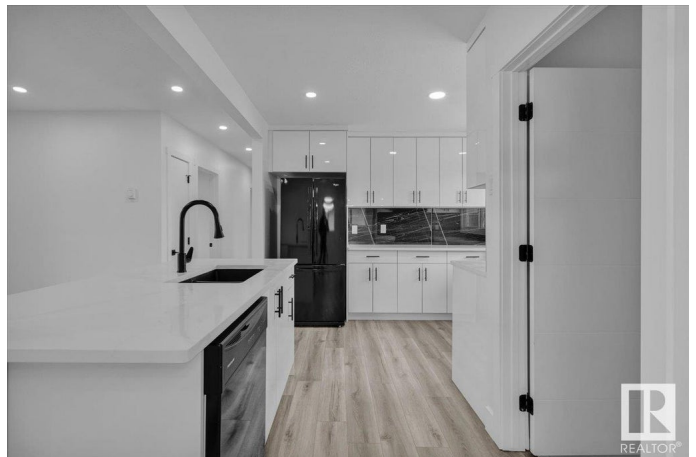
Kensington, Edmonton, AB

Would you look at this FULLY RENOVATED BEAUTIFUL bungalow! Stylish and Modernity meet in perfect harmony. You will get 5 bedrooms, 2 Full Washrooms, 2 Kitchens, Separate Basement Entrance, a Detached Garage, and a huge Backyard. This beauty is loaded with brand-new upgrades: Electrical, Plumbing, flooring, lighting, Paint, Cabinets, Countertops, Washrooms, HWT, Furnace, Shingles, Windows, and much more. Nestled in Kensington, it offers the perfect blend of comfort and convenience. Whether you're hosting family gatherings or enjoying a quiet night in, this home is designed for it all.

Built in 1958

### Essential Information

MLS® #	E4428068
Price	\$449,900
Bedrooms	5
Bathrooms	2.00
Full Baths	2
Square Footage	1,042
Acres	0.00
Year Built	1958
Type	Single Family
Sub-Type	Detached Single Family
Style	Bungalow



Status Active

### Community Information

Address 12416 136 Avenue  
Area Edmonton  
Subdivision Kensington  
City Edmonton  
County ALBERTA  
Province AB  
Postal Code T5L 4A8

### Amenities

Amenities Closet Organizers, Deck, Detectors Smoke, Fire Pit  
Parking Single Garage Detached

### Interior

Appliances Dishwasher-Built-In, Dryer, Garage Control, Garage Opener, Microwave Hood Fan, Refrigerator, Stove-Electric, Washer, Window Coverings  
Heating Forced Air-2, Natural Gas  
Stories 2  
Has Basement Yes  
Basement Full, Finished

### Exterior

Exterior Wood, Vinyl  
Exterior Features Back Lane, Fenced, Landscaped, Schools, Shopping Nearby  
Roof Asphalt Shingles  
Construction Wood, Vinyl  
Foundation Concrete Perimeter

### Additional Information

Date Listed March 28th, 2025  
Days on Market 14  
Zoning Zone 01

DATA IS DEEMED RELIABLE BUT IS NOT GUARANTEED ACCURATE BY THE REALTORS® ASSOCIATION OF EDMONTON. COPYRIGHT 2025 BY THE REALTORS® ASSOCIATION OF EDMONTON. ALL RIGHTS RESERVED. Trademarks are owned or controlled by the Canadian Real Estate Association (CREA) and identify real estate professionals who are members of CREA (REALTOR®, REALTORS®) and/or the quality of services they provide (MLS®, Multiple Listing Service®)

Listing information last updated on April 11th, 2025 at 7:47pm MDT