

\$649,000 - 148 Larch Crescent, Leduc

MLS® #E4416709

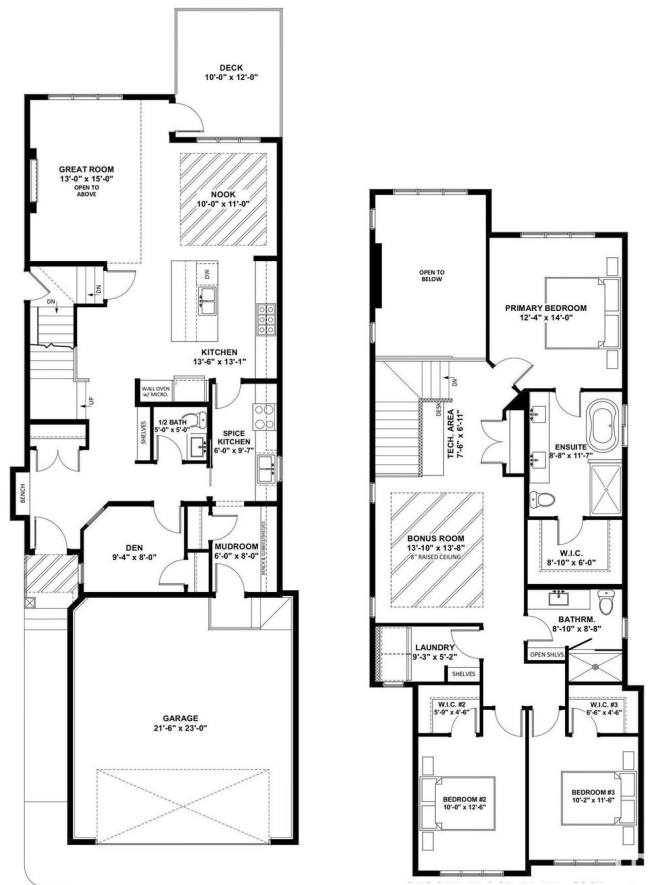
\$649,000

4 Bedroom, 2.50 Bathroom, 2,282 sqft

Single Family on 0.00 Acres

Woodbend, Leduc, AB

Welcome to your dream home in the Woodbend neighborhood of Leduc! This stunning residence offers a perfect blend of modern design & comfortable living. Step inside to discover a bright & inviting great room with an open-to-above ideal for family gatherings. The gourmet kitchen features a wall oven & microwave, along with a cozy nook for casual dining. A unique addition is the SPICE KITCHEN, perfect for preparing aromatic dishes. The main floor includes a versatile den and a convenient half bath. Upstairs, you'll find a spacious primary bedroom retreat with an ensuite bathroom and walk-in closet. 2 additional bedrooms, each with walk-in closets, are perfect for family or guests. A bonus room and tech area offer extra space for entertainment and work. Enjoy your private deck, and a spacious garage for ample storage. Additional features include a mudroom with bench and cubbies, and a second-floor laundry room. Currently under construction, personalize your space by selecting interior finishes.



Built in 2024

Essential Information

MLS® # E4416709

Price \$649,000

Bedrooms	4
Bathrooms	2.50
Full Baths	2
Half Baths	1
Square Footage	2,282
Acres	0.00
Year Built	2024
Type	Single Family
Sub-Type	Detached Single Family
Style	2 Storey
Status	Active

Community Information

Address	148 Larch Crescent
Area	Leduc
Subdivision	Woodbend
City	Leduc
County	ALBERTA
Province	AB
Postal Code	T9E 1N3

Amenities

Amenities	Off Street Parking, Carbon Monoxide Detectors, Ceiling 9 ft., Closet Organizers, Deck, Detectors Smoke, Exterior Walls- 2"x6", Hot Water Natural Gas, No Animal Home, No Smoking Home, Smart/Program. Thermostat, HRV System, Natural Gas BBQ Hookup, Natural Gas Stove Hookup
Parking Spaces	4
Parking	Double Garage Attached

Interior

Interior Features	ensuite bathroom
Appliances	Dishwasher-Built-In, Dryer, Garage Control, Garage Opener, Hood Fan, Oven-Built-In, Refrigerator, Stove-Gas, Washer
Heating	Forced Air-1, Natural Gas
Fireplace	Yes
Fireplaces	Insert
Stories	2
Has Basement	Yes

Basement Full, Unfinished

Exterior

Exterior Wood, Vinyl

Exterior Features Airport Nearby, Back Lane, Schools, Shopping Nearby, S

Roof Asphalt Shingles

Construction Wood, Vinyl

Foundation Concrete Perimeter

Additional Information

Date Listed December 29th, 2024

Days on Market 98

Zoning Zone 81

DATA IS DEEMED RELIABLE BUT IS NOT GUARANTEED ACCURATE BY THE REALTORS® ASSOCIATION OF EDMONTON. COPYRIGHT 2025 BY THE REALTORS® ASSOCIATION OF EDMONTON. ALL RIGHTS RESERVED. Trademarks are owned or controlled by the Canadian Real Estate Association (CREA) and identify real estate professionals who are members of CREA (REALTOR®, REALTORS®) and/or the quality of services they provide (MLS®, Multiple Listing Service®)

Listing information last updated on April 5th, 2025 at 11:32pm MDT

