

Courtesy Of Geordie M Morison Of MaxWell Progressive

\$520,000 - 102 9058 22 Avenue, Edmonton

MLS® #E4415776

\$520,000

0 Bedroom, 0.00 Bathroom,
Retail on 0.00 Acres

Summerside, Edmonton, AB

Excellent main floor retail/office opportunity in the highly desired Ellerslie Industrial Business Zone! With excellent visibility and easy access to major arteries like Anthony Henday and the QE2 highway, this property offers convenience and exposure for your business like no other. Featuring 1,692 square feet of space, 6 assigned parking stalls, two bathrooms, and more - this property has everything you need to take your business to the next level.

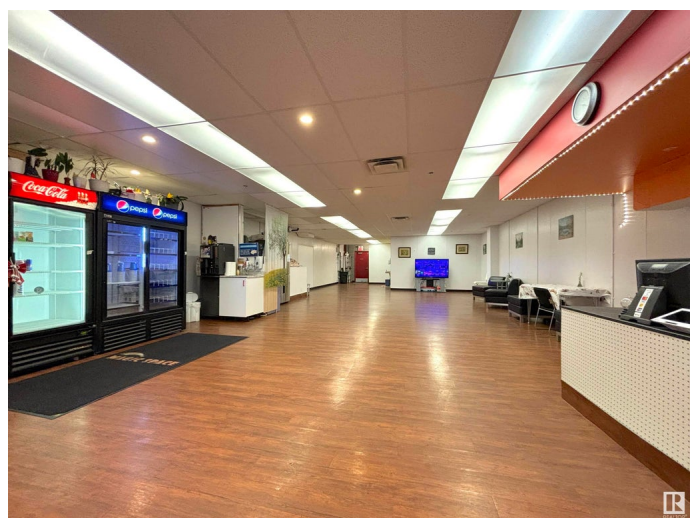
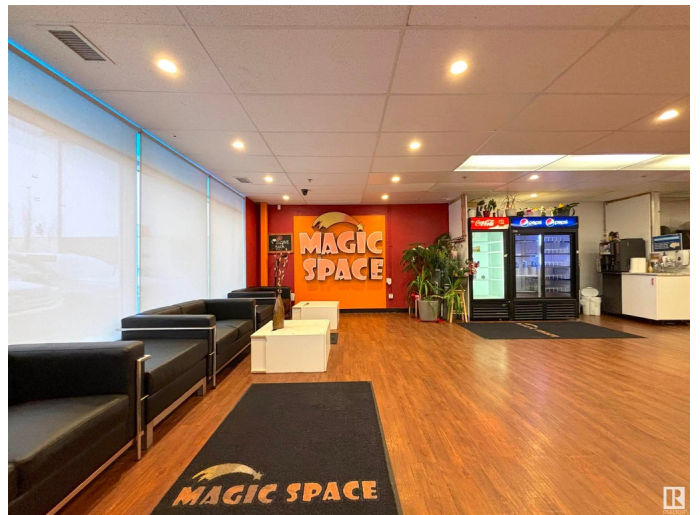
Built in 2013

Essential Information

MLS® #	E4415776
Price	\$520,000
Bathrooms	0.00
Acres	0.00
Year Built	2013
Type	Retail
Status	Active

Community Information

Address	102 9058 22 Avenue
Area	Edmonton
Subdivision	Summerside
City	Edmonton
County	ALBERTA
Province	AB



Postal Code T6X 1Z6

Exterior

Exterior Metal

Construction Metal

Additional Information

Date Listed December 11th, 2024

Days on Market 122

Zoning Zone 53

DATA IS DEEMED RELIABLE BUT IS NOT GUARANTEED ACCURATE BY THE REALTORS® ASSOCIATION OF EDMONTON. COPYRIGHT 2025 BY THE REALTORS® ASSOCIATION OF EDMONTON. ALL RIGHTS RESERVED. Trademarks are owned or controlled by the Canadian Real Estate Association (CREA) and identify real estate professionals who are members of CREA (REALTOR®, REALTORS®) and/or the quality of services they provide (MLS®, Multiple Listing Service®)

Listing information last updated on April 12th, 2025 at 7:47pm MDT